

Woodlands Health Vibrant Campus Handbook



Welcome to Our *Vibrant Campus*

At Woodlands Health (WH), we believe healing goes beyond clinical care. Our Vibrant Campus Initiative brings this vision to life, creating a dynamic and inclusive space that supports holistic well-being for everyone who lives, works, and heals here.

This Handbook will take you through thoughtfully designed spaces aligned with our four pillars:



WHhealth

Promoting health literacy, wellness, and health activation to empower individuals and communities in their health journeys.



WHarts

Harnessing the power of the arts to inspire healing, bring joy, and nurture emotional well-being through creative expression and engagement.



WHeat

Advancing green sustainability efforts to create an eco-conscious campus that supports environmental and personal well-being.




WHome

Honouring our shared heritage, building strong community connections, and deepening partnerships that foster a sense of belonging.

How to Use This Handbook

Whether you're a first-time visitor or a staff member, this handbook allows you to discover WH at your own pace, uncovering the stories behind each feature and landmark.

- **Navigation made easy**

- Refer to the map in the next page to view key features and landmarks.
- Look out for the physical signs with QR codes for their stories and videos.
- Choose your own path: Start anywhere and create a route based on your interest.
- To return to the map, tap  at the top right corner of the page.

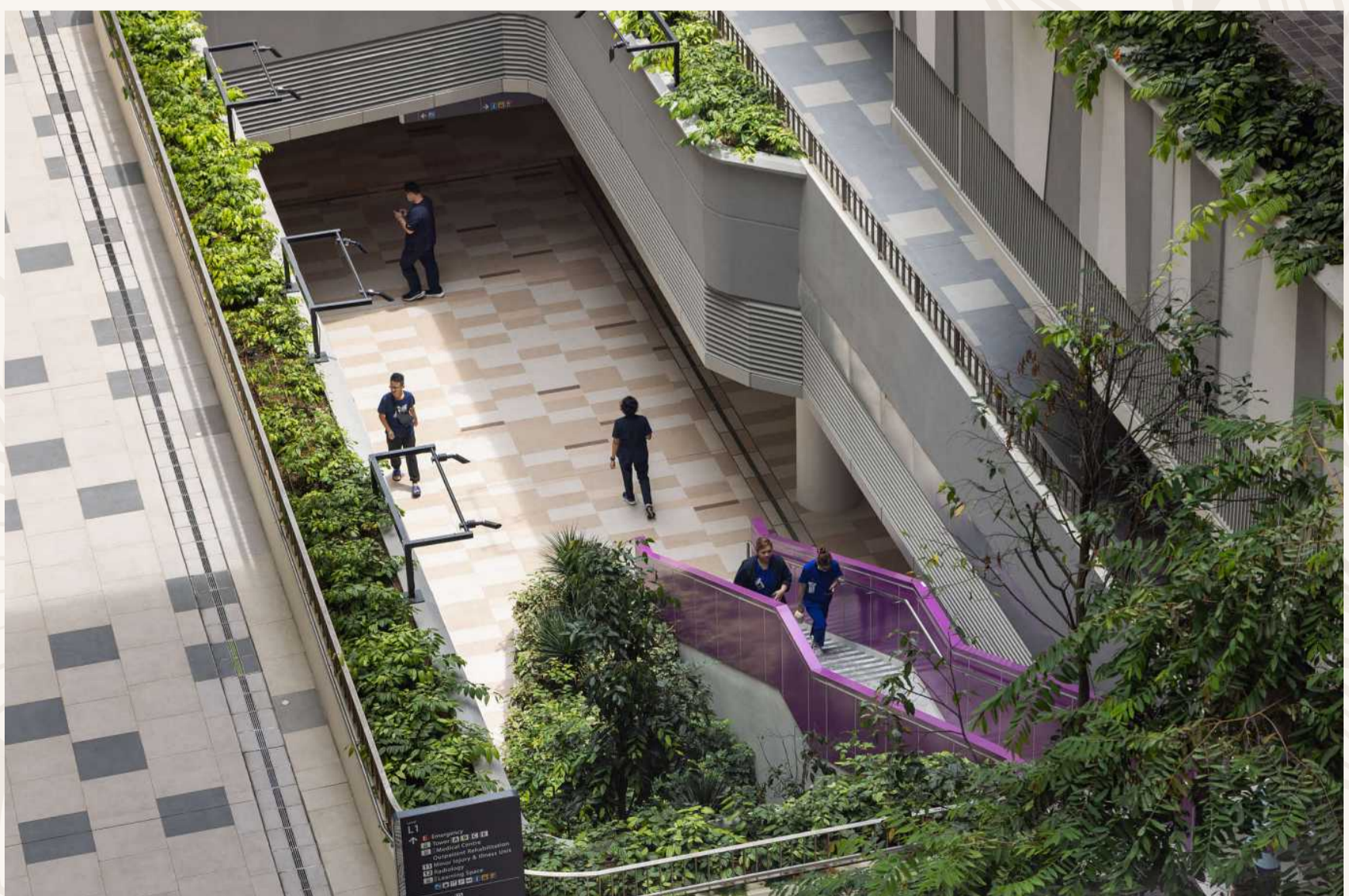
- **Suggested routes:**

- From Main Drop Off (level B1): Begin at location 1 and follow the numbers.
- From Woodlands South MRT (Level B2M): Start at location 4 and explore upwards through B1, L1, and L2.
- Follow themed routes using colour-coded Vibrant Campus pillars on the map.

Important notes:

- Some features and landmarks. on Level 1 are unsheltered. Please take care of your safety, especially during wet weather.

The estimated tour duration is 1 hour.



Landmarks and Features of Basement 1



Theme:

●	WHealth	●	WHeal
●	WHearts	●	WHome

- 1 The Heliconia Bench: Where Design Meets Purpose
- 2 A Welcoming Gateway: Arrival at Woodlands Health
- ● 3 Architectural Model: A Vision of Integrated Healthcare
- ● 4 A Sanctuary of Books and Melodies (at level B2M)
- 5 Central Spine: Find the Butterfly
- 6 Heritage Wall: Bridging Past and Present at Woodlands
- ● 7 The Event Plaza: A Canvas of Vibrant Community and Culture
- ● 8 Art Jam Benches: Our Community Bench Project
- 9 Rain Gardens: Sustainable Water Management in Action
- ● 10 Heritage Rocks: From Bedrock to Landmark
- 11 Active Living Staircases: Steps Towards Better Health
- 12 Arts For Healing: Where Visual Arts Meet Performance
- ● 13 The Cascading Waterfall: Nature's Symphony
- 14 Sustainability Wall: Community Art for Environmental Change
- 15 The Butterfly Pavilion: Where Art Meets Function

Landmarks and Features of Level 1



Theme:

● WHealth	● WHeal
● WHearts	● WHome

- 16 Trees of Legacy: Celebrating Life and Healing
- 17 A Garden for Healing: Exploring the Woodlands Healing Garden
- 18 Art in Architecture: The Living Canvas
- 19 Gallery Space and Bridge: Our Journey Through Time (on Level 2)
- 20 Sustainable Design: Building a Greener Healthcare

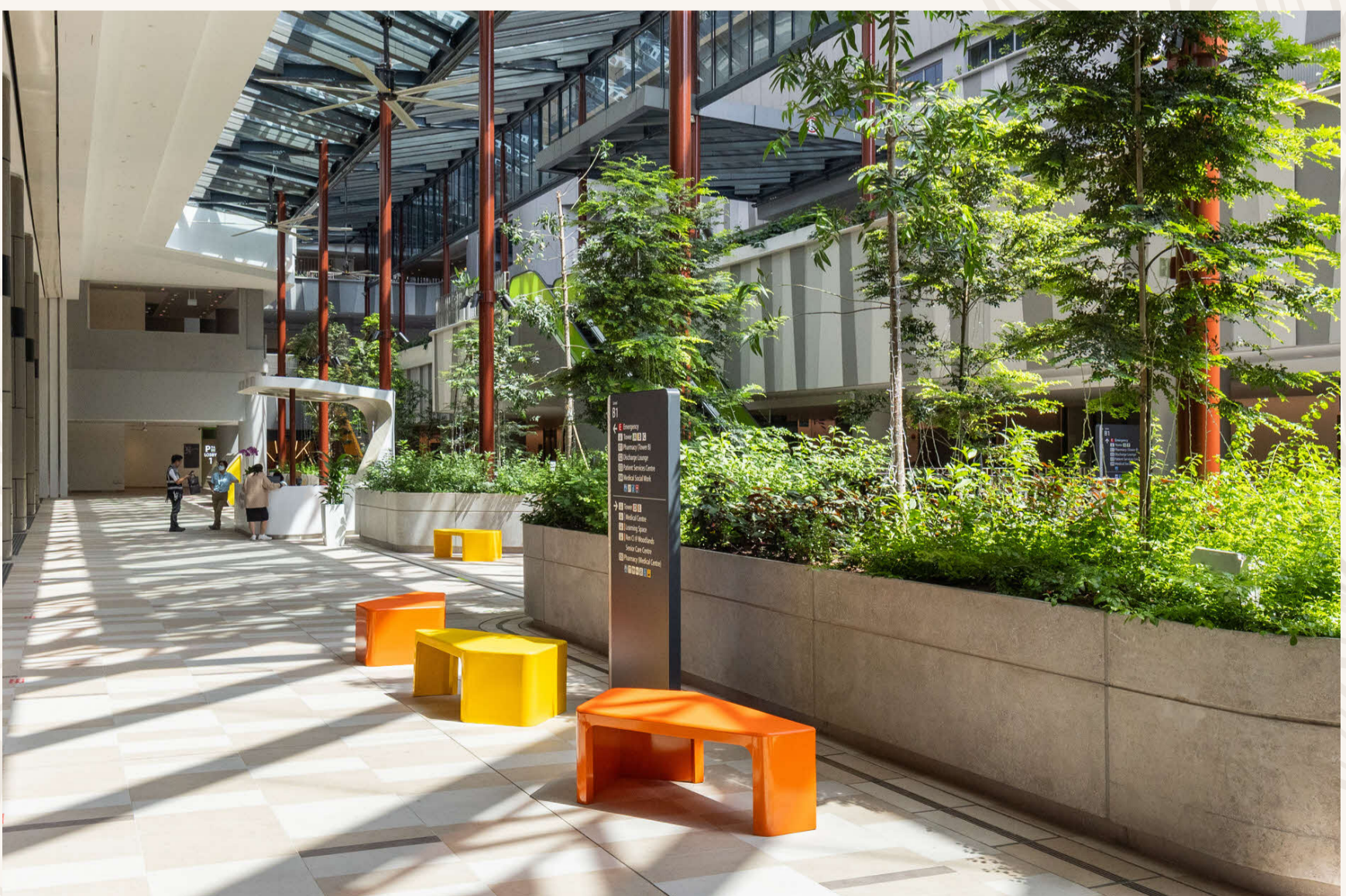


The Heliconia Bench: Where Design Meets Purpose

In 2018, a meaningful collaboration between WH and the National University of Singapore's School of Design and Environment (NUS-SDE) gave rise to a unique furniture design initiative aimed at enhancing our Campus environment.

From five promising proposals, the "Play Petal" concept stood out for its creativity and potential to foster meaningful spaces within a healthcare setting. Following its selection, the design was carefully refined — with close attention to form, dimensions, and materials — to ensure that the benches meet essential requirements for safety, ease of maintenance, and practical use.

The furniture's colour palette was inspired by the heliconia. It resonated strongly with staff and they affectionately named it the "Heliconia Bench".



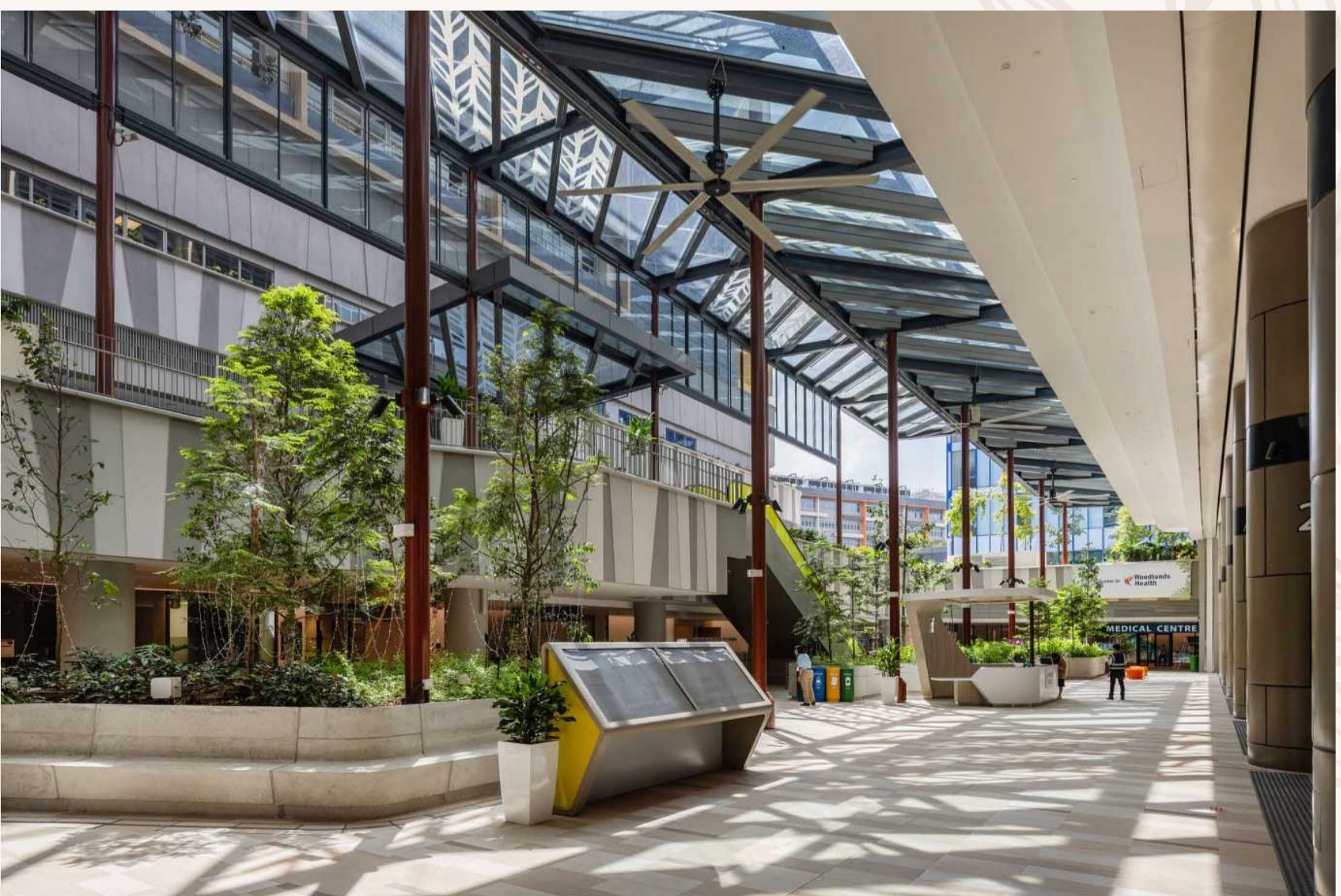


A Welcoming Gateway: Main Drop Off at WH Campus

Drawing inspiration from airport terminals and tropical rainforests, the Main Drop Off at WH Campus creates a striking first impression. The elongated, airport-style layout ensures smooth traffic flow whilst delivering a grand welcome to visitors.

The architecture masterfully blends rainforest elements into its design, crafting a subtle yet immersive natural setting. Towering columns support the glass canopy, mimicking majestic forest trunks, while strategically placed glass panels create dappled shadows that echo the experience of walking beneath a forest canopy.

The concierge counter's mushroom-like design naturally blends in, making it welcoming and easy to spot. Together, these features create more than just a functional space — they mark the beginning of a healing journey through the Campus.





Architectural Model: A Vision of Integrated Healthcare

Strategically positioned along Woodlands Drive 17, WH's 7.66-hectare Campus (equivalent to 11 football fields) represents a thoughtful integration of healthcare, nature, and community connectivity. The Campus extends into the Woodlands Healing Garden, creating an expanded green space for patients, staff, and the community to enjoy.

The design prioritises accessibility and functionality through:

- Connection to park connectors and cycling paths.
- Pedestrian-friendly walkways throughout Level 1.
- Building orientation that reduces heat and saves energy.
- Outpatient services located near MRT and bus stops.
- Long-term care facilities situated in quieter areas with garden views.
- Eleven floors (including 4 basement levels) connected by link bridges.
- Seamless connection between acute and community hospital services.

This innovative design creates a healthcare environment that goes beyond treating illness - it promotes wellness through thoughtful architecture and community integration.

Tap below to watch exclusive insights from our architect.

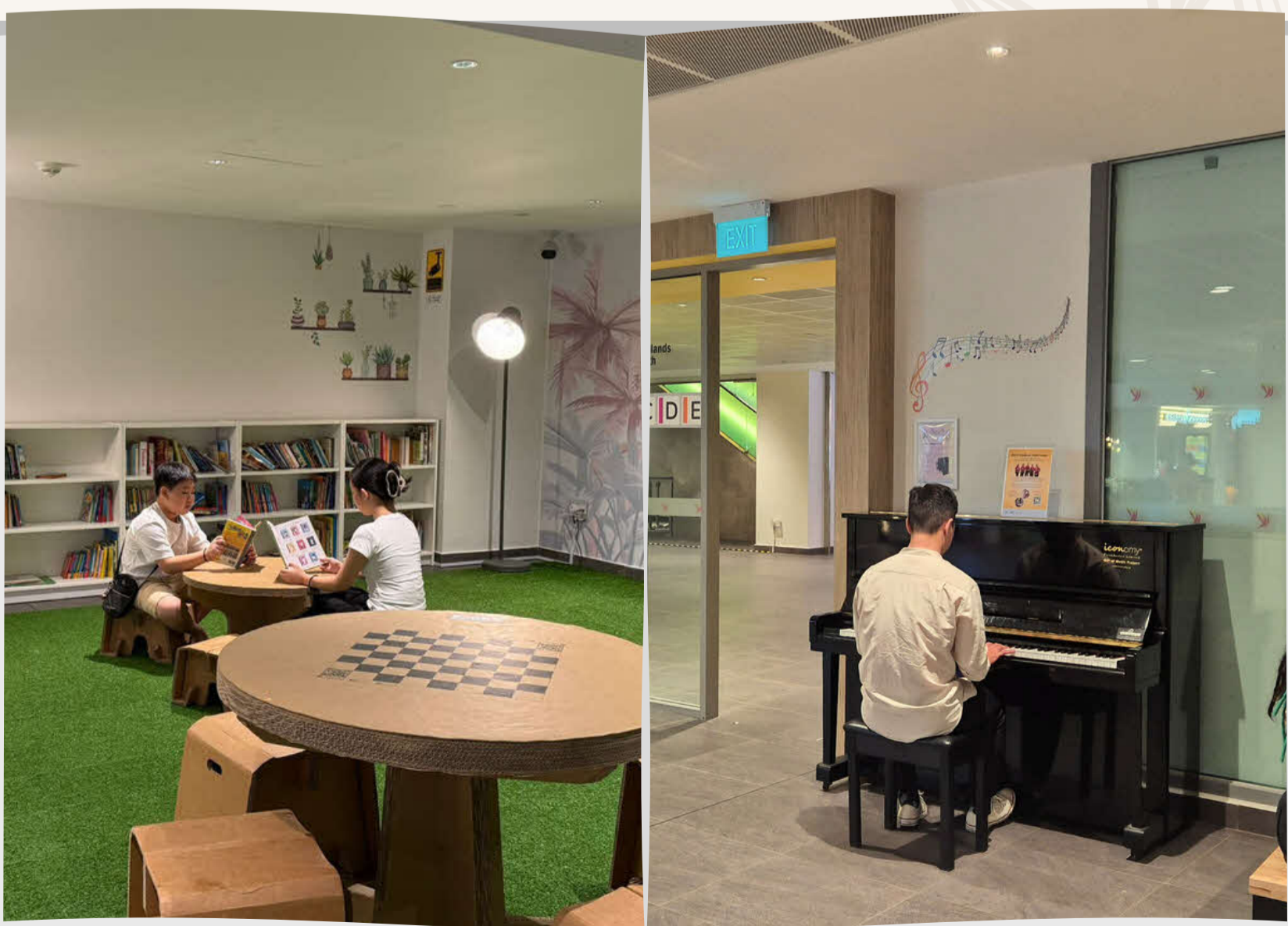




A Sanctuary of Books and Melodies

Located at level B2M, this thoughtfully designed reading corner offers a quiet sanctuary within the healthcare setting for mental and emotional well-being. Surrounded by a wide selection of books, visitors are invited to pause, reflect, and find comfort in moments of gentle escape.

The space is enhanced by eco-friendly, recyclable cardboard furniture, generously donated by Trio Packaging Industrial Private Limited. A beautifully refurbished piano is a gift from Iconomy Foundation Limited's Gift of Music Project, adds a soulful touch. It stands as both a testament to sustainability and an invitation for musical expression, encouraging visitors to share the joy of music while supporting our commitment to reducing waste.





Central Spine: Find the Butterfly

Stretching an impressive 85 metres through the heart of WH Campus, the Central Spine corridor serves as more than just a connecting pathway between the northern and southern sections. This passageway transforms the simple act of walking into an engaging experience through its innovative use of art and interactive elements.

The corridor's walls showcase striking graphic artworks that do more than merely decorate the space. Hidden within these designs are eight carefully concealed butterfly motifs, creating an unexpected treasure hunt for observant passersby. This playful integration of butterflies into the artwork encourages people to engage with their surroundings in a more meaningful way.

The subtle yet effective design feature exemplifies how healthcare spaces can combine functionality with elements of surprise and pleasure, creating moments of connection and discovery in everyday experiences.





Heritage Wall: Bridging Past and Present at Woodlands

The Heritage Wall at WH Campus stands as a meaningful bridge between the area's past and present, featuring carefully preserved artifacts from the old Woodlands Town Centre. The original balusters and mosaic stools, once familiar fixtures in the daily lives of Woodlands residents, have found a new home here, reminding us of the area's history.

What makes this installation particularly special is the intergenerational collaboration that brought it to life. Students from neighbouring schools were invited to refresh these historical pieces, adding their own contemporary interpretations of what community means to them. This unique blend of preservation and renewal creates a powerful dialogue between different generations of Woodlands residents.





The Event Plaza: A Canvas of Vibrant Community and Culture

At WH Campus, the Event Plaza showcases a remarkable 30 by 8.4-metre mural by renowned local artist Yip Yew Chong, illustrating Woodlands' evolution through time. This vibrant masterpiece captures reminiscent scenes: an NS boy returning home, the lively atmosphere of a heartland coffeeshop, and helicopters flying overhead.

The artwork also bridges past and future, featuring both the upcoming Rapid Transit System (RTS) and nostalgic kampong scenes. Sharp-eyed visitors can spot Yip's trademark - three cats named Grumpy, Smiley, and Scared - cleverly hidden within the mural.

The Event Plaza is always full of life. It hosts weekly markets, health talks, and exercise groups. Music is also in the air with performances from Singapore Symphony Orchestra, Singapore Chinese Orchestra, Orkestra Melayu Singapore, along with shows by local school students. We are co-creating this space together with the community to be more than just an artwork - a hub where Woodlands' heritage meets its dynamic present.

Watch the creation of the mural below:





Augmented Reality Experience



Find Your Spot

Head over to the Event Plaza and stand in front of the mural.

Get Ready Your Mobile

Allow camera permission when prompted. Turn on your device's sound for a full experience.



Point and Watch!

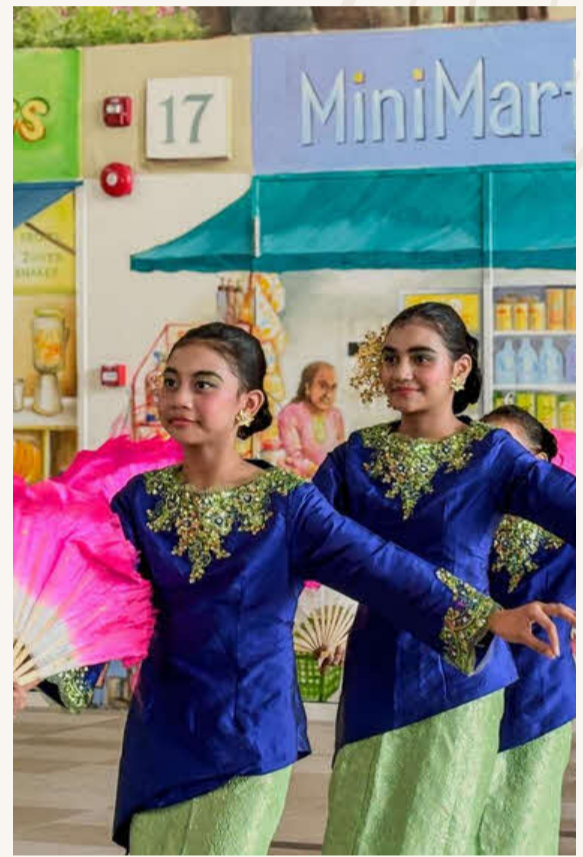
Hold your phone up to the mural wall. Watch as the static mural transforms into a stunning animated spectacle!

Ready for it?

Start Now



Vibrant Moments at the Event Plaza





Vibrant Moments at the Event Plaza





Vibrant Moments at the Event Plaza





Art Jam Benches: Our Community Bench Project

Here are six unique benches as part of Singapore Science Park's 40th anniversary "Art Jam Science Park" initiative. They embody a powerful collaboration celebrating diversity, inclusivity, and sustainable design.

Created by talented artists from ART:DIS, Metta Welfare Association, Movement for the Intellectually Disabled of Singapore, Rainbow Centre, and Journey by Touch Community Services, each bench is a display of creativity and resilience. The materials themselves carry meaning - crafted from reclaimed pine wood pallets and fallen Balau trees, they demonstrate how sustainability and artistry can work hand in hand.

These benches are part of a larger collection of 40 pieces distributed across Singapore, with our Campus chosen to host six of these inspiring works. Their presence at WH reflects our commitment to community engagement and social responsibility, while providing functional art that enriches our healing environment.





Rain Gardens: Sustainable Water Management in Action

Here before you is one of WH's two innovative Rain Gardens, part of our sophisticated bioretention system. These carefully engineered gardens, together covering a total catchment area of 2,712 square metres, demonstrate smart water management.

The Rain Gardens function as natural water treatment systems, effectively slowing and detaining stormwater runoff while simultaneously purifying it through natural filtration processes. This collected rainwater is then repurposed through the campus-wide irrigation system, creating a sustainable cycle of water usage.

This water management system achieves remarkable results, meeting approximately 87% of the Campus's projected irrigation demands. Through this innovative approach, WH not only reduces its environmental footprint but also sets a new standard for sustainable healthcare facilities.





Heritage Rocks: From Bedrock to Landmark

Beneath WH Campus lies a significant geological heritage - the Bukit Timah Granite formation. During the Campus construction's piling stage, the excavation process unearthed substantial quantities of this ancient granite, presenting an opportunity for sustainable construction practices.

Rather than treating these excavated rocks as construction debris for disposal, the architects chose an environmentally conscious approach. They integrated these natural materials meaningfully into the Campus design, reducing waste while maintaining a connection to the site's geological history.

A striking example is the 500-kilogram cylindrical granite piece that now serves as a key wayfinding landmark.



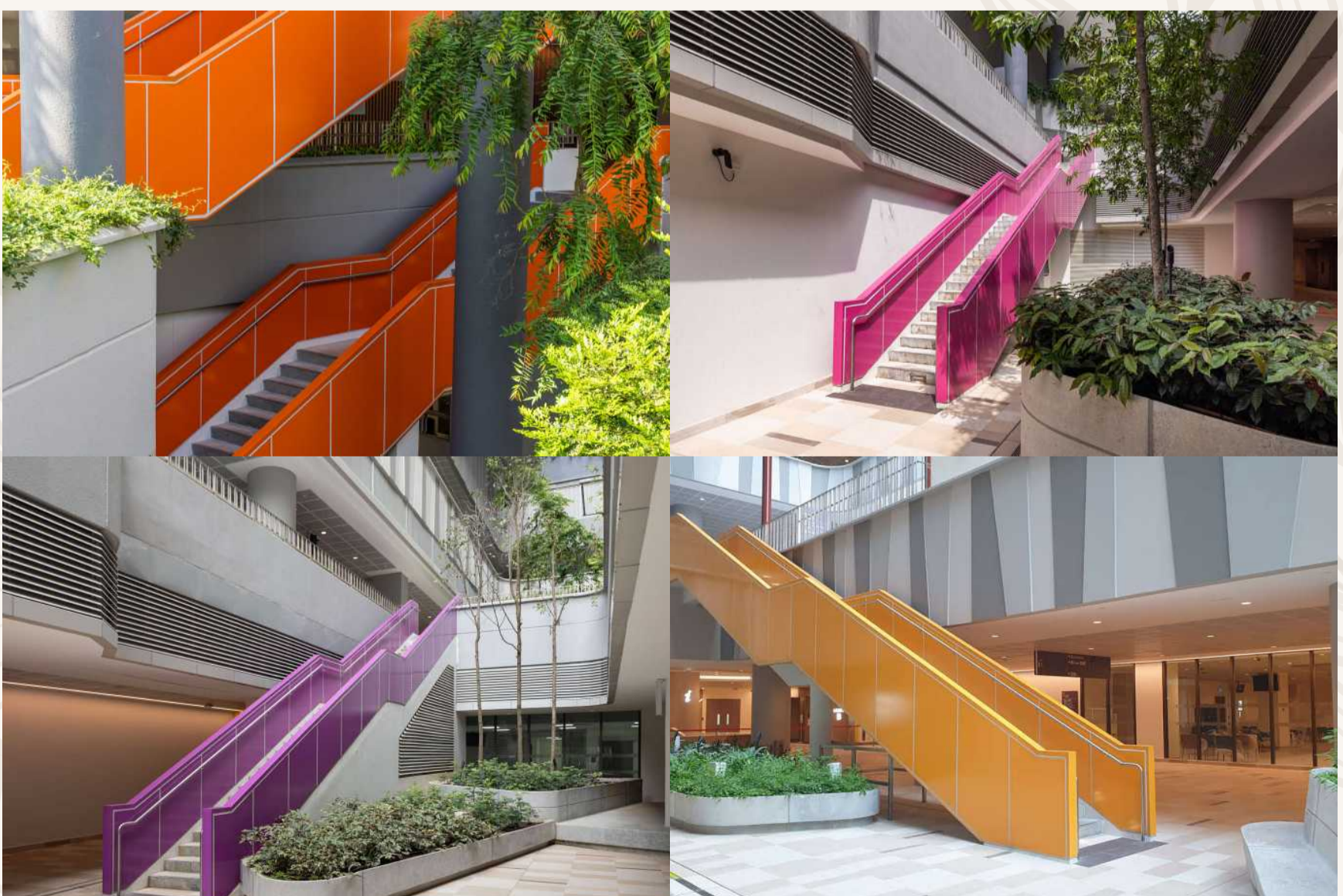


Active Living Staircases: Steps Towards Better Health

Across Woodlands Health Campus, the Active Living Staircases turn everyday movement into opportunities for better health. Strategically located near lift lobbies, these vibrant staircases offer an inviting alternative to the lift — encouraging staff, patients, and visitors to choose the healthier route.

Their design reflects an understanding of how the built environment can gently shape behaviour. By making stair use feel natural and appealing rather than obligatory, the staircases promote active living as part of daily routines.

Each staircase is colour-coded to match its corresponding tower lobby. This distinctive cladding serves both aesthetic and practical purposes, offering visual appeal while helping with wayfinding throughout the Campus.





Arts For Healing: Where Visual Arts Meet Performance

Art has long served as a powerful tool for healing, transforming clinical spaces into environments of comfort and emotional well-being. At WH, we've embraced this philosophy through our dedicated art wall, which showcases creative expressions from various contributors: students from neighbouring schools, therapeutic art created by patients and colleagues, and meaningful contributions from staff members, advisors, and friends.

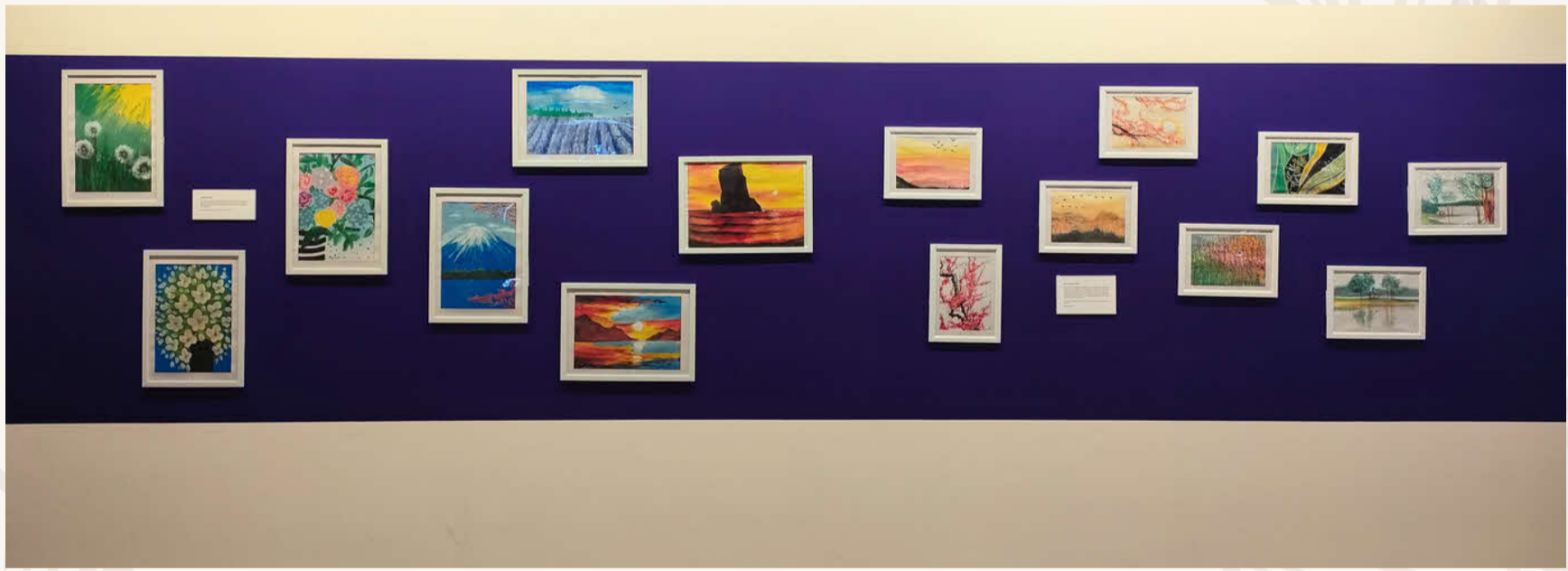
The space in front of this art wall comes alive with performances by students from neighbouring schools, adding a vibrant dimension to our healing environment. These live performances complement the visual artwork, creating a multi-sensory experience.

To keep our environment fresh and engaging, we regularly update both our displayed artwork and performance schedule, ensuring there's always something new to inspire our patients, families, and colleagues.



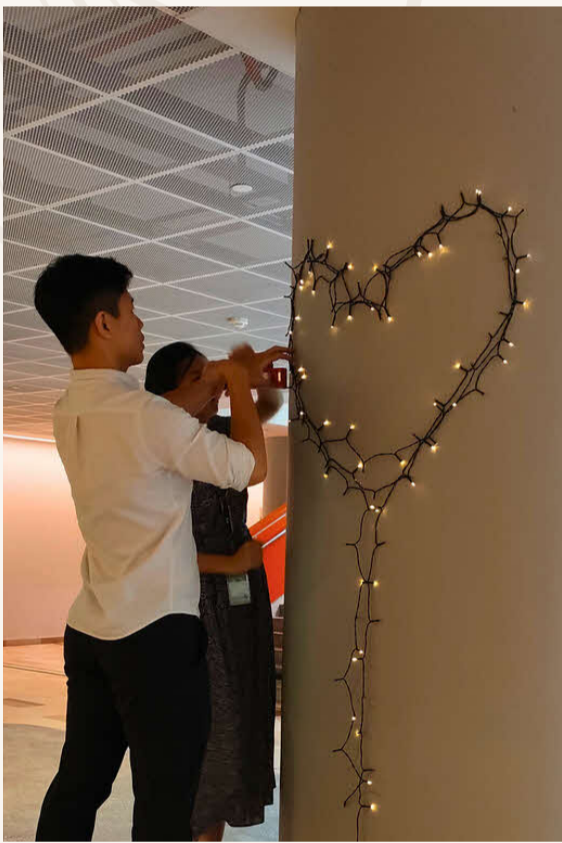


Our Curated Art Pieces:





Performances From Neighbouring Schools:



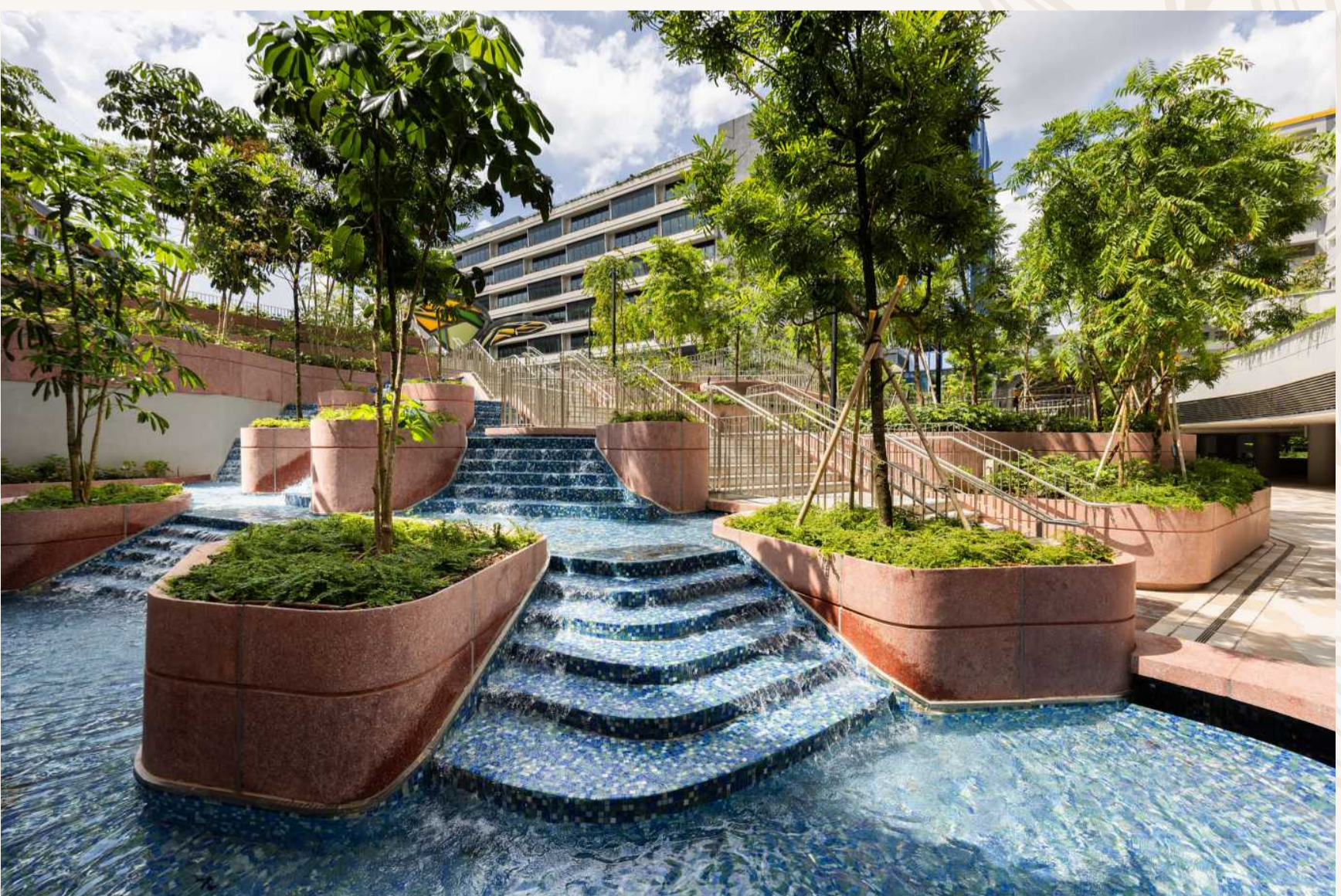


The Amphitheatre: Cascading Waterfall

Studies have shown that the gentle sound of flowing water has a remarkable ability to promote emotional well-being and enhance relaxation. At WH, we've harnessed this natural therapy through our thoughtfully designed water feature at the Amphitheatre.

The cascading water creates a soothing soundtrack that works in harmony with its visual appeal, while the surrounding lush plants add to the therapeutic environment. This combination of flowing water and verdant landscape offers a multi-sensory healing experience that goes beyond mere aesthetics.

Set within our therapeutic landscape, the Amphitheatre area serves as a peaceful sanctuary where patients, visitors, colleagues, and community members can find moments of tranquility. Whether it's a brief pause during a busy day or a longer period of reflection, this serene space provides a natural retreat for anyone seeking calm and restoration in our healthcare environment.





Sustainability Wall: Community Art for Environmental Change

The vibrant mural adorning our wall displays our commitment towards community collaboration and environmental consciousness. Designed by fellow healthcare worker Anne Neo and brought to life through the combined efforts of ITE Sparks, Happee Hearts, and WH colleagues in October 2024, this artwork carries a powerful message about sustainability.

The mural serves as a colourful reminder of the essential 3Rs: Reduce, Reuse, and Recycle, encouraging our community to take meaningful steps toward environmental responsibility. Its creation process itself embodied these principles, with empty pill bottles from our pharmacy being repurposed as paint containers and brush wash buckets, replacing disposable alternatives.

Through this collaborative art project, we demonstrate that sustainability isn't about grand gestures but rather about mindful choices in our daily routines.

Put this into practice by using the recycling bins placed in front of the mural - each bin is clearly labelled to help you sort your recyclables correctly.



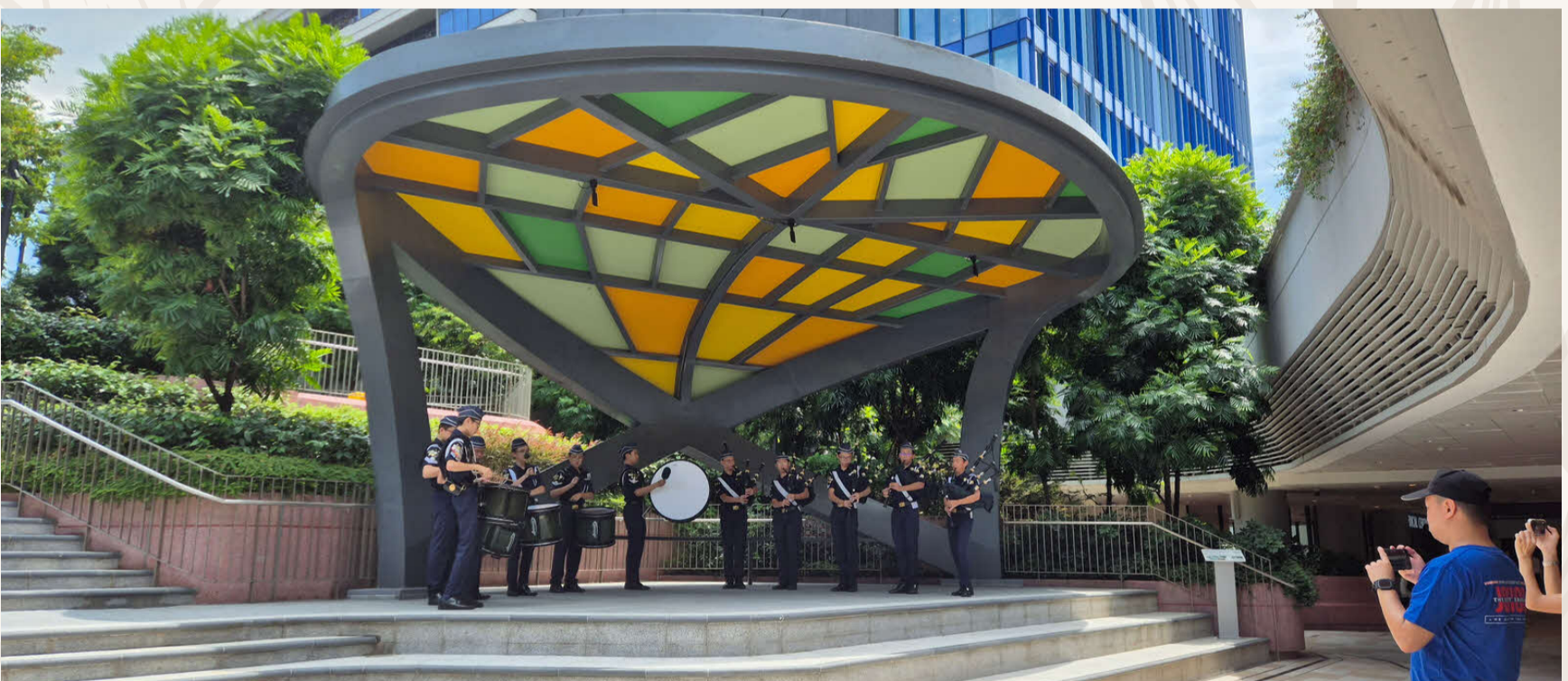


The Butterfly Pavilion: Where Art Meets Function

The Pavilion stands out as an eye-catching feature along the main walkways of WH Campus. Designed to look like butterfly wings, its unique shape brings a playful and cheerful feel to the healthcare environment.

These colourful structures serve two purposes: providing shelter and serving as eye-catching landmarks on the Campus. Throughout the day, patients, visitors, and colleagues find respite under these wing-like canopies, making necessary rest stops a moment of visual delight.

The centrepiece of this collection is the grand pavilion nestled at the base of the Amphitheatre. It serves as a dynamic performance stage, creating a versatile space that brings the community together.





Trees of Legacy: Celebrating Life and Healing

The official opening of WH on 13 July 2024 was commemorated with a meaningful tree planting ceremony. Senior Minister Mr Lee Hsien Loong was joined by WH Development Board Chairman Ms Jennie Chua, Minister for Health Mr Ong Ye Kung, and Ren Ci Chairman Mr Loke Choke Ming for this ceremony. Together, they planted the White Mempat (*Cratoxylum Maingayi*), a tree that is native to South East Asia.

This tree was specially chosen for its medicinal properties and importance to Singapore's natural heritage.

The White Mempat, known for its pharmacological value in traditional medicine, stands as a symbol of healing and hope. Its presence at WH reflects our commitment to both healthcare excellence and environmental conservation. As this tree grows, it will serve as a living reminder of our dedication to nurturing both human and ecological well-being in our community.

Watch our Official Opening ceremony below.



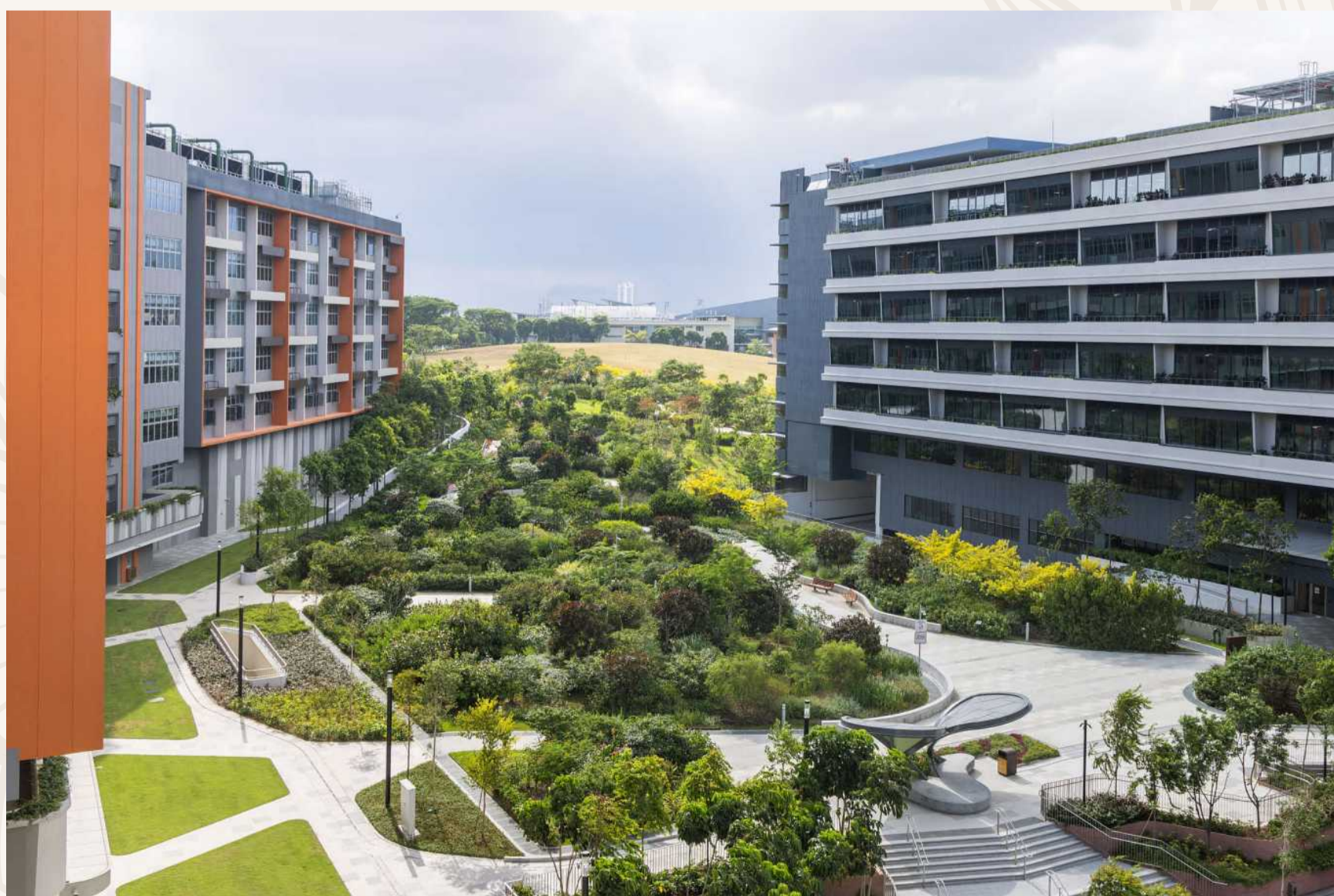


A Garden for Healing: Exploring the Woodlands Healing Garden

Nestled within WH is the Woodlands Healing Garden, NParks' first purpose-built park for healing and its largest therapeutic garden till date. The 1.7-hectare park, designed in collaboration with WH, is fully integrated with the hospital and accessible to patients, staff, visitors and the wider community.

Connected to the Park Connector Network and featuring a pedestrian- and cyclist-friendly layout, the garden promotes holistic well-being through four distinct zones:

- Healing Forest: A lush, seasonal grove with a hilltop pavilion offering scenic views and tranquil spaces for long-term care residents.
- Wildflower Terraces: Colourful meadows filled with flowering plants that attract butterflies and birds.
- Nature Playgarden: A child-friendly, natural play area made from wood, sand, and forest plantings.
- Activity & Wellness Lawns: Open spaces for social interaction, exercise, and recovery, shaded by Rain Trees and enhanced by sustainable water features.





Art in Architecture: The Living Canvas

At WH, our Campus design embraces an Art in Architecture philosophy, weaving creative elements into the very fabric of our buildings. From geometric patterns to watercolour effects, art is integrated into the architectural design, creating an environment that resonates with our community.

A striking example of this approach is our feature wall at the Medical Centre Level 1, where layers of decorative paint create a mesmerizing abstract waterfall effect. This artistic treatment extends the blue shade of the exterior façade into the interior, harmoniously connecting with the Medical Centre's wayfinding colour scheme.

The beauty of this abstract artwork lies in its ability to spark imagination and personal interpretation. While the cascading blues primarily evoke the sense of flowing water, visitors have discovered various images within its layers – from floating clouds to rolling waves, and even the surprising silhouette of a horse. This interactive element encourages engagement, inviting everyone to discover their own interpretations within its flowing patterns.





Gallery Space and Bridge: Our Journey Through Time

Welcome to our Gallery Space at Medical Centre Level 2, where the story of WH comes alive. Before our modern buildings stood here, this was a gentle hill that locals nicknamed "Teletubby Hill" because its rolling landscape reminded them of the children's TV show.

Through photos and video, you'll discover how we transformed from a simple hilltop into today's advanced healthcare campus. The gallery highlights key moments – from our groundbreaking ceremony, through the COVID-19 period, to our official opening.

Step outside the Gallery Space onto our connecting Gallery Bridge, a unique vantage point linking the Medical Centre and Tower A. This elevated walkway offers stunning views of our Campus and a glimpse of the Woodlands Healing Garden.

As you walk along the bridge, take note of the informative displays revealing fun facts about our Campus. The bridge's exterior features vibrant macaw graphics, a tribute to the site's unique heritage – this area was once a spot for bird lovers who used to trained their macaws here.





Featured Fun Facts at the Gallery Bridge:

CONSTRUCTION PRODUCTIVITY

Prefabricated facade panels
It is crucial to ensure construction productivity, quality and safety in a large-scale construction project such as our Campus. The use of prefabricated (prefab) elements enables time and manpower savings for productivity, improve workplace safety, environmental performance and quality assurance as heavy works are done off-site in a controlled factory environment.

Prefabricated planters
In our Campus, there are:
2370 (55%) prefab columns,
5123 (59%) prefab facade panels,
2268 (89%) prefab planters,
399 (52%) prefab bathroom units!

Prefabricated Bathroom Units (PBU)

Prefab Mechanical Electrical & Plumbing (Prefab MEP) systems are integrated into a sub-assembly off-site. The longest Prefab MEP installed in our campus is along the main corridor in Basement 2, measuring 60m!

Prefabricated riser ducts

FUN FACT

Community

Before the Campus was built, the site that it is sitting on was nicknamed "Teletubby Hill" by residents due to its resemblance to the landscape seen on children's television programme. This was where residents came for their recreational activities.

Community Engagement has been a key priority to understand the aspirations of the local community and leverage on the strong community spirit for sustainable health creation and social connection.

Primary Care, Acute/Comm Hospital Care, Residential Care, Centre/Home based Care, Social & Comm Partners.

Building Staff & Trust Staff Meeting, May 2019
Primary Health Care, 2019
NCC Campus Opening Ceremony

Nature

Inspired by tropical rainforest, the campus features various forms of landscape to promote healing and opportunity to be close to nature.

Various therapeutic gardens offers rehabilitation and sensory experience, while intergenerational garden enables normalisation in our long-term care facility.

Emergent Layer: Roof-top gardens and greenery on balconies.

Canopy: High-canopied trees with primary green spaces.

Understorey: Well-connected pathways with green bridges.

Ground Floor: Forest and green community spaces.

Intergenerational Garden
Rehabilitation Garden
Sensory Garden

Art in Architecture

Art in Architecture strategy incorporates various forms of arts into architecture elements, including facade and landmarks, features walls and unique elements.

1) FEATURE ART
2) WATERCOLOUR ART
3) GEOMETRIC SHAPES

Our Campus also has public spaces (the Terrace and pavilions) that can be used for other forms of arts, such as performing arts, from budding artists!

PARK INTEGRATION

Wildflower Terraces

WHC 7.66 ha

Woodlands Healing Garden

Initial land demarcation

Integrated Health Campus

Woodslands Healing Garden is fully integrated with the LSha Woodlands Healing Garden (designed by WPark), resulting in a green space in the Park. Patients, staff and visitors can easily enjoy the wide array of open spaces and greenery on the ground floor, which is car-free.

Woodslands Healing Garden is a favourite spot for our visitors, patients and staff, whether it is to have a quiet moment of contemplation or to take a walk among the wild flowers and lush greens.

From Debris to Deco

Learning Space

Entrance ramp walls clad with rock stones

Southern Arrival

and a heart-shaped granite discovered during construction of Woodlands Healing Garden.

WAYFINDING AND ACTIVATION

Spanning an area the size of 11 football fields, the Campus is designed to enable visitors to easily find their way.

Central spine provides clear lines of sight and towers and visual landmarks. Colour, typeface and icons are applied to assist wayfinding.

Colourful Active Living built to connect the art and have become landmarks for wayfinding, while encouraging active lifestyle habits.



Sustainable Design: Building a Greener Healthcare

WH proudly holds the BCA Green Mark Platinum certification, demonstrating our dedication to environmental sustainability. Our Campus design incorporates multiple innovative features that work together to minimize our environmental impact while maximizing operational efficiency.

Key Sustainable Features:

- Strategic building orientation with short east-west facing walls to minimise direct sunlight exposure
- Campus designed to maximise natural wind flow
- Green façades to reduce thermal transfer through external walls
- Double-glazed window systems for better insulation
- Solar panels on our rooftops generating clean energy
- Waste reduction with food digester system

These design elements and systems work in harmony, serving as a model for sustainable healthcare design.





Building Tomorrow's Healthcare Community Together

Thank you for journeying through WH's Vibrant Campus. Through our four pillars — WHealth, WHome, WHeal, and WHearts — we hope you've experienced how Woodlands Health's care goes beyond hospital walls to become a space of healing, hope, and heart.

Our Campus is a place where healthcare meets nature, art, and community. Every corner is thoughtfully designed to uplift the human spirit and reflect our belief in a more connected, inclusive future for all.

To explore the full range of care we offer, including our clinical specialties, visit our website below:

<https://www.wh.com.sg/ClinicalCareServices/Pages/default.aspx>

Your journey doesn't have to stop here. Tap below and discover how you can contribute — whether by giving, volunteering, or sharing your talents.



Make a gift to support our patient care programmes and healing spaces.



Volunteer to help create a welcoming environment for our community.

Together, we can grow a healthier, more vibrant Woodlands — for this generation and the next.

Vibrant Campus

WHhealth

WHarts

WHeal

WHome

About This Handbook

We invite you to explore the WH Campus through our Vibrant Campus initiative, which blends healthcare, sustainability, heritage, and the arts. Whether you are a visitor, staff, or member of the community, we welcome you to discover stories, landmarks, and hidden gems across our healing spaces.

Woodlands Health
17 Woodlands Drive 17
Singapore 737628

Design & Produced by
Campus Planning & Development

Photography by
Finbarr Fallon Creative Office
Campus Planning & Development

All rights reserved. No part of this publication may be reproduced, stored in a retrieval system, or transmitted in any form or by any means — electronic, mechanical, photocopying, recording, or otherwise — without the prior written permission of Woodlands Health.